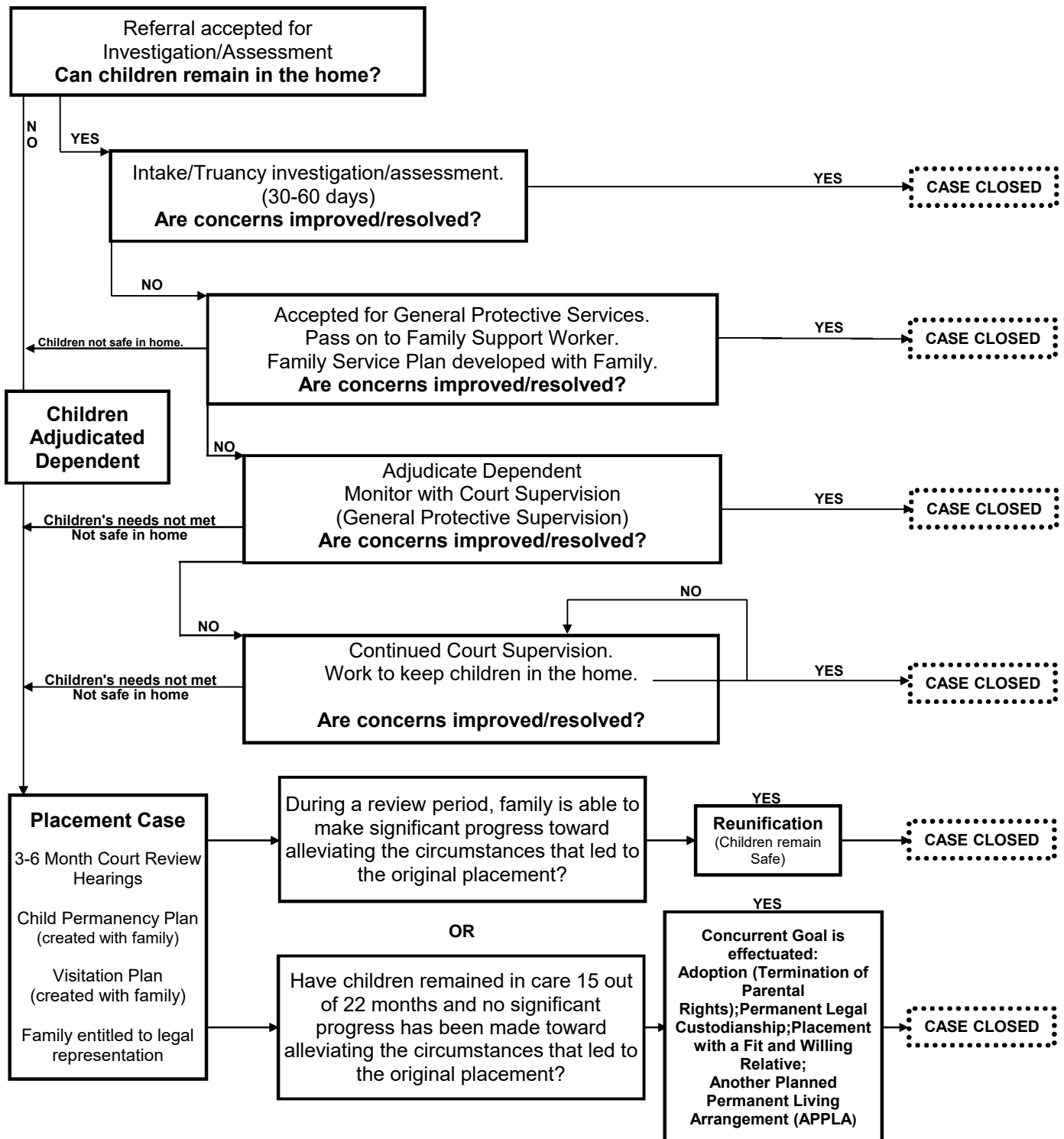


# Possible Case Outcomes



\* Each Outcome will be determined on a Case-by-Case basis. \*

Extended Family Resources, Friends, Community Supports, Resource Families, Family Finding, Family Group Decision Making, Emergency Services, Independent Living Services, Fiscal Department, Support Staff, Paralegals, Quality Assurance, Therapists, Physicians, Education Providers and many other possible resources/supports not listed here each represent an important part of the **entire** CYS process and the work being done throughout each step of the case.