

ACTPO

February 1, 2023



Staff Updates

Significant Developments

Development Name	Resubmission	Municipality	School District	Street Location	Total New Residential Lots or Units (≥ 25)	Total Building Square Feet (≥30,000) for Industrial, Commercial, or Mixed Use Development
Green Pallet, Inc.	NO	Mt. Joy	LASD	3608 Baltimore Pike	0	69000
Thunderbolt Self Storage LLC	YES	Union	LASD	5304 Baltimore Pike	0	47194
Wade Run Community	YES	Mt. Joy	GASD	3465 Taneytown Road	99	0
Mayberry at Mason Dixon	YES	Littlestown	LASD	635 Hanover Pike	250	0
Cedarfield	NO	Bonneauville	LASD	E Hanover St	77	0

Staff Updates

HOP/Traffic Study/Project Meetings

- SRTP/PA Commuter Services
 - Board Meeting (November & January)
- PennDOT
 - Bi-Monthly Planning Partners Call (November & January)
 - District 8 Planning Partners Call (November)
 - Historic Metal Truss Bridge Management Plan
 - District 8 Highway Safety Plan
- Royal Farms (Hamilton Township)



ADAMS COUNTY TRANSPORTATION PLANNING ORGANIZATION (ACTPO)



ADAMS COUNTY HISTORIC METAL TRUSS BRIDGES

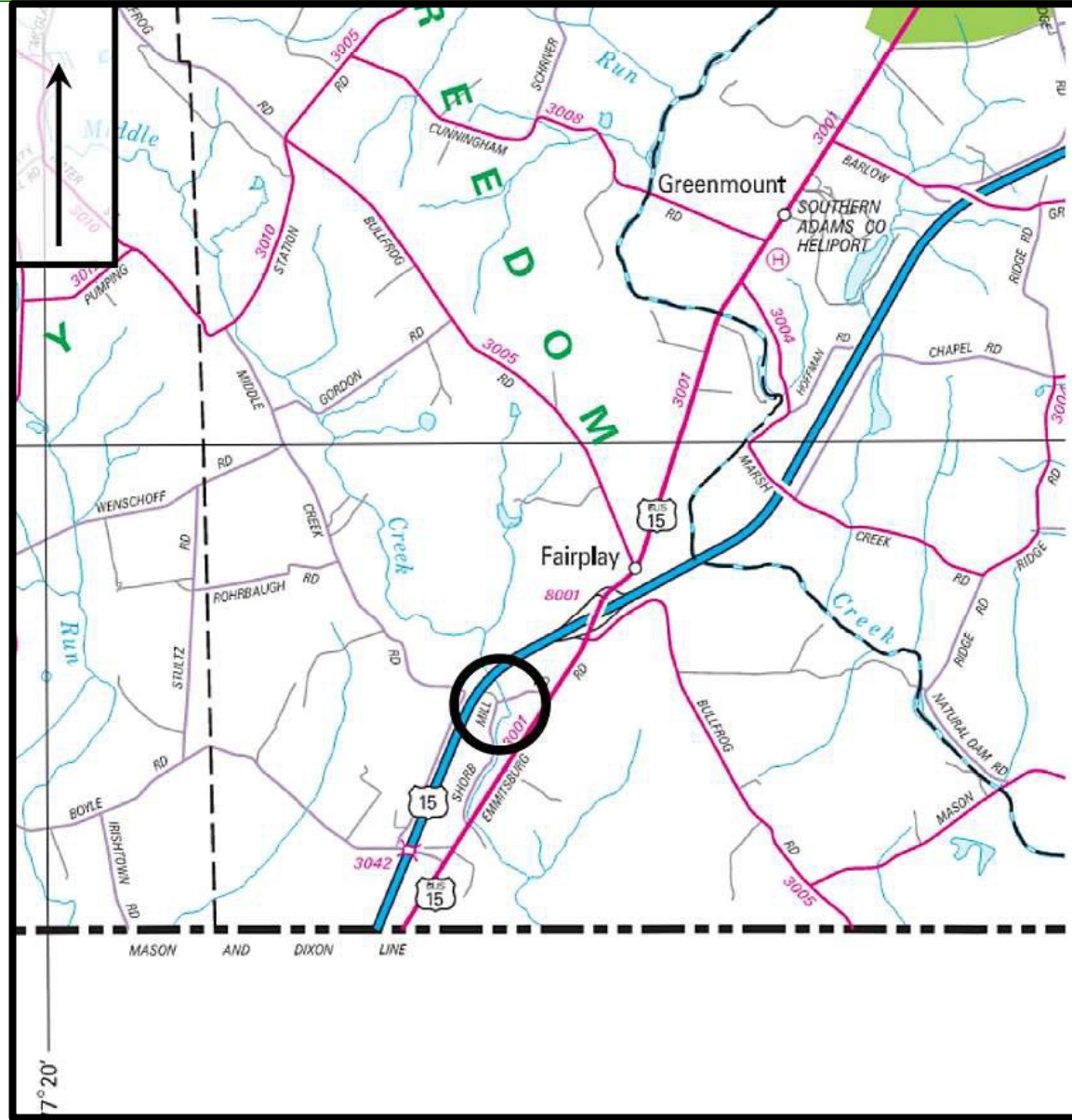
BRIDGES



- ◆ Adams County Bridge No. 5 (Rhodes Mill Bridge) - Rehabilitation completed in 2022
- ◆ Adams County Bridge No. 118 (Zeigler Mill Bridge) - In need of rehabilitation

- ◆ Adams County Bridge No. 5 (Rhodes Mill Bridge)
- ◆ Shorb Mill Road over Middle Creek in Freedom Township
- ◆ Historic truss bridge built in 1905
 - ❖ Eligible for the National Register of Historic Places
 - ❖ Needed rehabilitation
 - ❖ Was posted for Weight Limit 3 Tons
- ◆ Provides access to residences during flooding

ADAMS COUNTY BRIDGE No. 5



ADAMS COUNTY BRIDGE No. 5



- ◆ ACTPO approved adding the rehabilitation project to the TIP in 2017
- ◆ Funded with Act 13 Marcellus Legacy Funds
- ◆ Rehabilitation completed in 2022
 - ❖ Construction cost \$654,000
 - ❖ Much lower cost than bridge replacement
- ◆ Work included:
 - ❖ Transporting trusses to a fabrication shop
 - ❖ Removing lead-based paint
 - ❖ Repairing and repainting trusses, and
 - ❖ Re-erecting the trusses

- ◆ Work also included:
 - ❖ Replacing the floor system with galvanized and painted beams, and
 - ❖ Constructing a wood deck
- ◆ Increased posting to Weight Limit 15 Tons
- ◆ Increased weight limit allows for use by ambulances

ADAMS COUNTY BRIDGE No. 5



ADAMS COUNTY BRIDGE No. 5



ADAMS COUNTY BRIDGE No. 5



ADAMS COUNTY BRIDGE No. 5



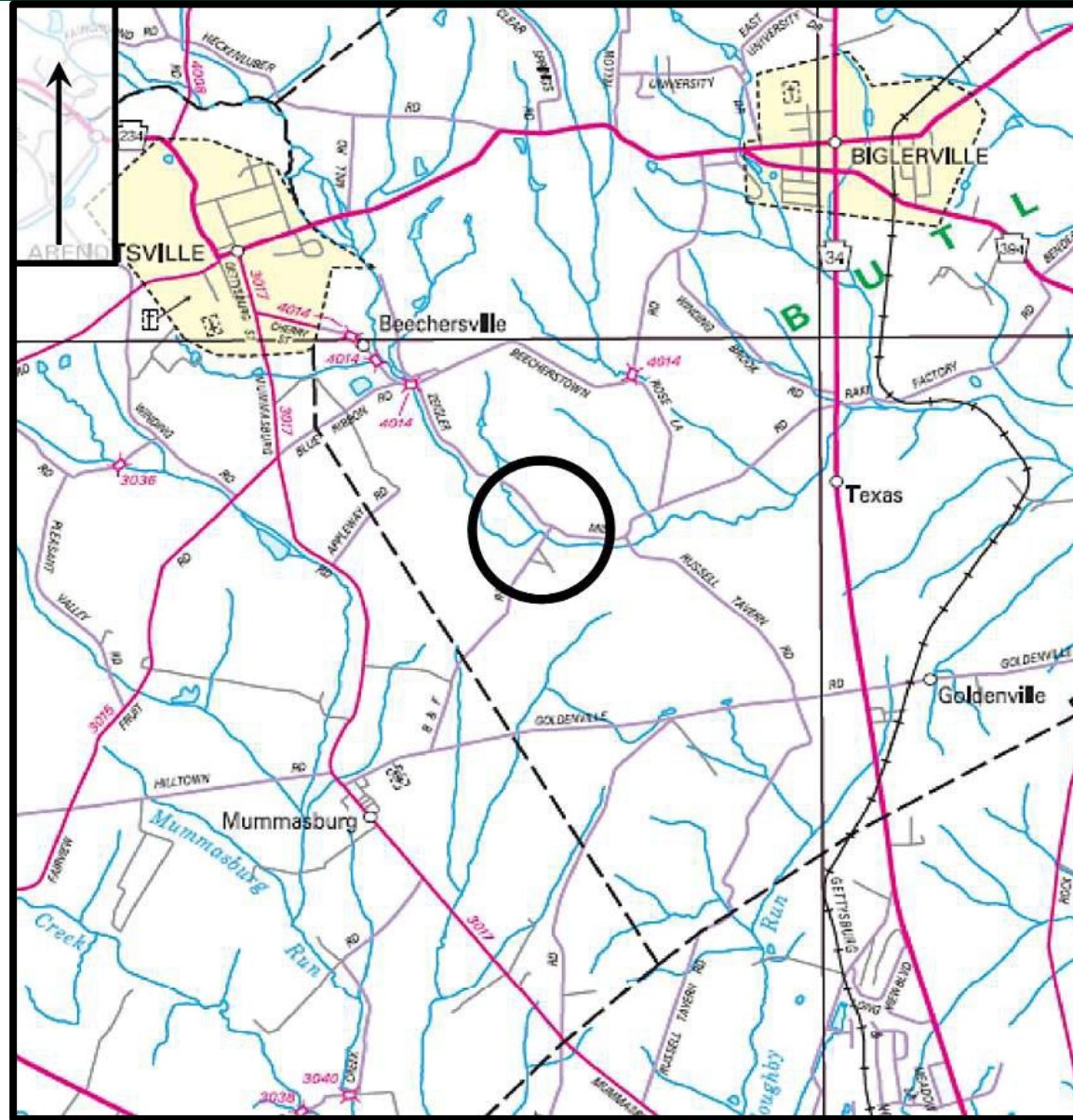
- ◆ Adams County is the winner of the 2022 Road and Bridge Safety Improvement Award presented by:
 - ❖ PennDOT
 - ❖ County Commissioners Association of PA (CCAP), and
 - ❖ PA Highway Information Association (PHIA)

ADAMS COUNTY BRIDGE No. 118



- ◆ Adams County Bridge No. 118 (Zeigler Mill Bridge)
- ◆ B & F Road over Conewago Creek in Butler Township
- ◆ Historic metal truss bridge built in 1911
 - ❖ Eligible for the National Register of Historic Places
 - ❖ In need of rehabilitation
 - ❖ Posted for Weight Limit 12 Tons Except Combinations 19 Tons
- ◆ Provides paved road access to residences
- ◆ Rehabilitation approach similar to Bridge No. 5 could be applied
 - ❖ Raising weight limit up to 20 Tons possible
 - ❖ Improve access for emergency vehicles

ADAMS COUNTY BRIDGE No. 118



ADAMS COUNTY BRIDGE No. 118



ADAMS COUNTY BRIDGE No. 118



- ◆ Adams County met with:
 - ❖ PennDOT
 - ❖ PA State Historic Preservation Office
- ◆ PennDOT outreach to Adams County to discuss the Historic Metal Truss Capital Rehabilitation Program
- ◆ Statewide Reserve of federal funds set aside from the Transportation Secretary's Discretionary Funding
- ◆ \$1M statewide per Federal Fiscal Year in 2023 and 2024
- ◆ \$2M statewide per FFY starting in 2025

- ◆ Goal of Program is to promote the rehabilitation of historic metal truss bridges for continued vehicular use
- ◆ Program Committee is evaluating a preliminary list of historic metal truss bridges. Committee comprised of:
 - ❖ PennDOT
 - ❖ FHWA
 - ❖ PA State Historic Preservation Office
- ◆ Bridge No. 118 is included in evaluation as High preservation priority
- ◆ Selection criteria includes “strong local support”

THANK-YOU!

William D. Cameron, PE

Pennoni

5072 Ritter Road, , Suite 102


Mechanicsburg, PA 17055

717-620-5932

wcameron@pennoni.com



SRTA – Transit Update



SAME DAY SHARED RIDE

PILOT PROGRAM

Rides funded by PWD and the Lottery are eligible for the same day scheduling pilot.

GUIDELINES:



Same Day and Next Day requests must be made by 1:30PM. After that, the regular scheduling process will follow.



Same Day requests must be made at least 2 hours prior to the trip.



Same Day trips will be charged an additional convenience fee of \$1.00.



During this pilot program, the safest way to reserve your trip is to book the day before. **Space is limited** and same day trips may be denied.



All trip requests must fit within standard county guidelines.

For more information or to schedule your trip, call 1-800-632-9063.



SRTA – Transit Update



EL VIAJE COMPARTIDO EN EL MISMO DÍA

EL PROGRAMA PILOTO

Los viajes financiados por PWD y la Lotería son elegibles para el mismo día piloto de programación.

LAS PAUTAS:

1:30

Las solicitudes del mismo día y del siguiente día deben realizarse antes de la 1:30PM. Después de eso, seguirá el proceso de programación regular.



Las solicitudes del mismo día deben realizarse al menos 2 horas antes del viaje.



Los viajes del mismo día tendrán un cargo adicional de \$1.00.



Durante este programa piloto, la forma más segura de reservar su viaje es reservar el día anterior. **El espacio es limitado** y los viajes del mismo día pueden ser denegados.



Todas las solicitudes de viaje deben ajustarse a las pautas estándar del condado.


Para obtener más información o para programar su viaje, llame al 1-800-632-9063.






SRTA – Transit Update

SATURDAY, FEBRUARY 4
TRANSIT EQUITY DAY
FOR CIVIL RIGHTS AND A HEALTHY PLANET

In honor of Rosa Parks's birthday, passes are 50% off through the Token Transit App, Feb 4-11, 2023!



 **Download the Token Transit app!**

Sale ends February 11, 2023. No refunds. Fixed Route passes only eligible for sale price. Valid on multi-ride and single-ride passes.

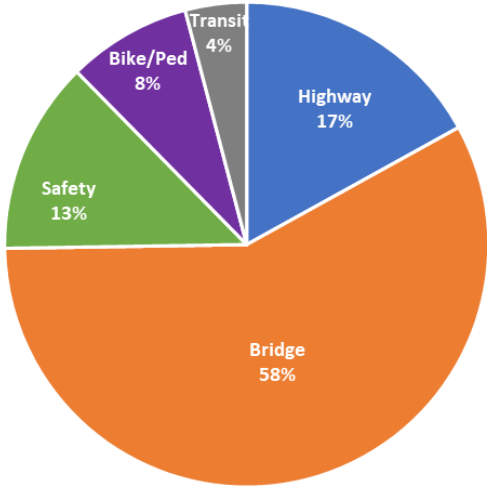
FFY 2022 Adams County Obligation Report

Previous FFY Obligated Fund Amounts

Year	Obligated Funds	Number of Projects	De-obligated Funds
FFY 2019	\$2,910,953	8	(\$302,580)
FFY 2020	\$12,155,436	6	(\$627,459)
FFY 2021	\$4,635,797	10	(\$232,058)
FFY 2022	\$9,664,325	11	(\$2,747,878)

FFY 2022 Summary

FUNDING CLASS	OBLIGATE	%	DE-OBLIGATED	%
	D			
Highway	\$1,640,020	17%	(\$2,747,878)	100%
Bridge	\$5,584,456	58%	\$0	0%
Safety	\$1,243,849	13%	\$0	0%
Bike/Pedestrian	\$800,000	8%	\$0	0%
Transit	\$396,000	4%	\$0	0%
Totals:	\$9,664,325		(\$2,747,878)	

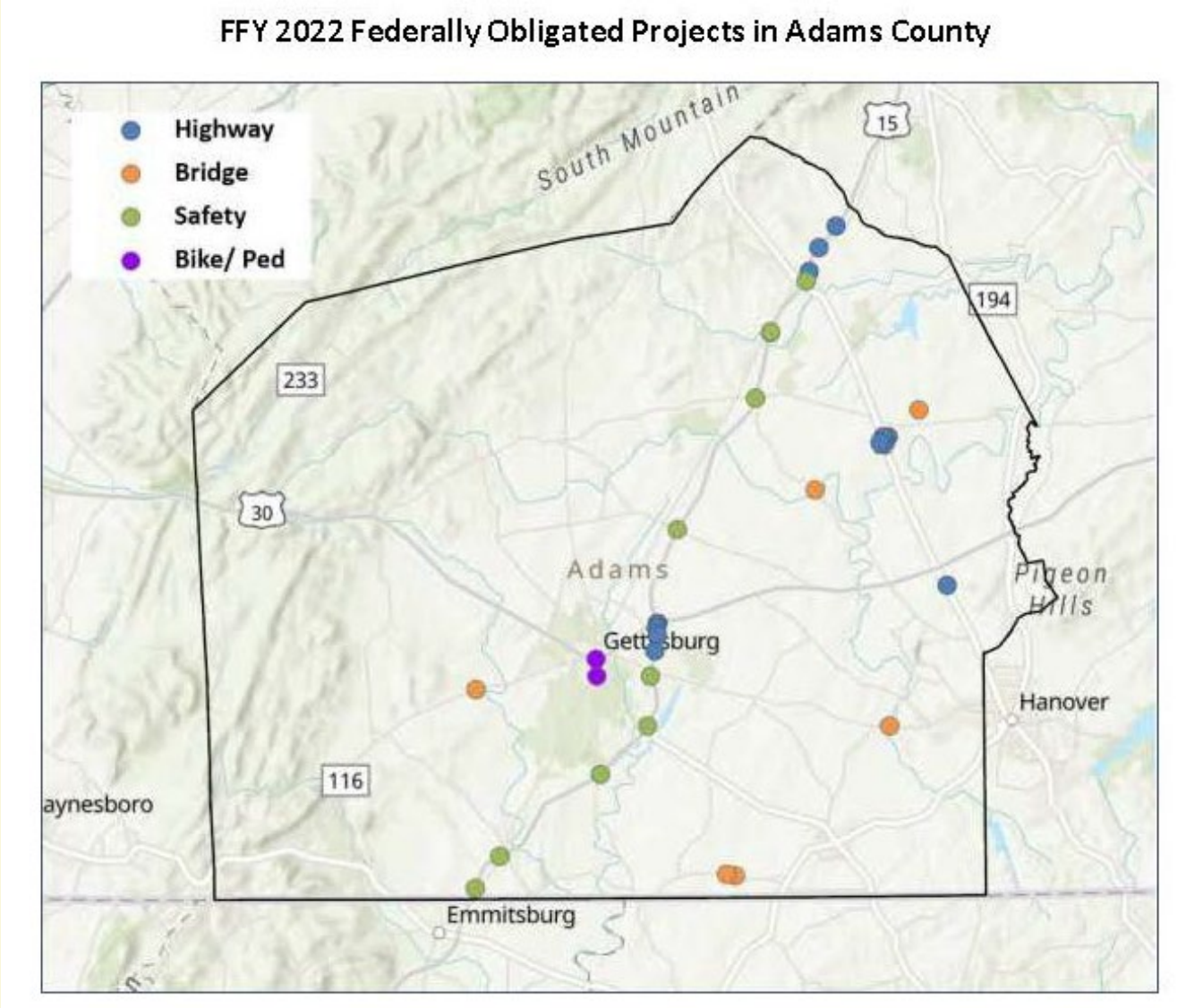


FFY 2022 Adams County Obligation Report

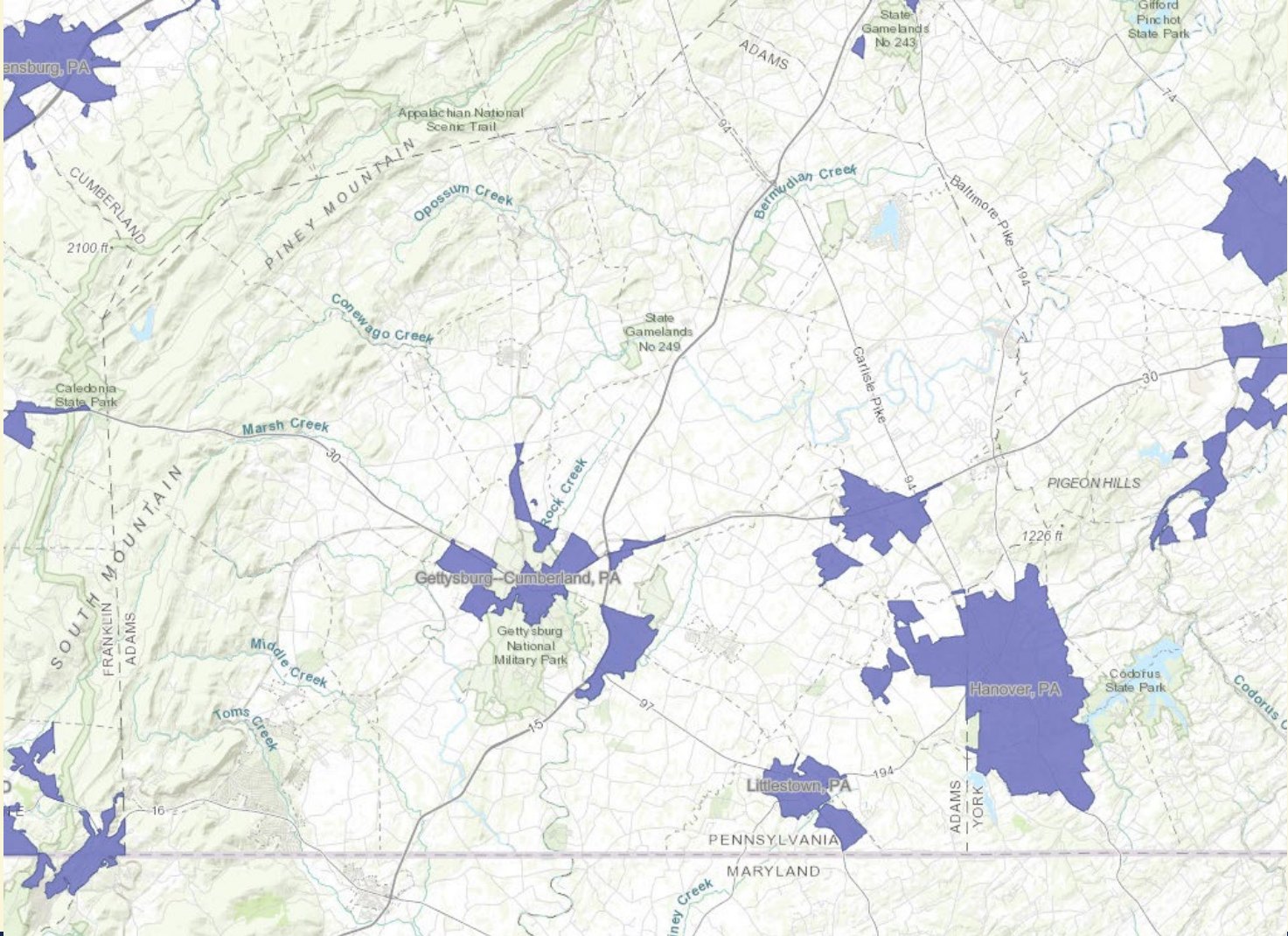
FFY 2022 Federally Obligated Projects in Adams County

MPMS	PROJECT TITLE	MUNICIPALITY	OBLIGATED	DE-OBLIGATED
HIGHWAY PROJECTS				
102333	US 15 Improvements – Adams	Huntington/ Latimore	\$1,606,184	
94894	PA 94 & 394 Intersection Improvements	Reading	\$33,836	\$19,041
58136	US 15/US 30 Interchange	Straban		\$2,707,096
105331	Carlisle Pike Resurface	Hamilton/ Oxford		\$21,741
Subtotals:			\$1,640,020	\$2,747,878
BRIDGE PROJECTS				
106665	PA 116 over Tributary of Marsh Creek	Highland	\$213,000	
113071	SR 116 Bridge over Conewago Creek	Conewago	\$3,803,341	
78640	Conewago Creek Bridge	Straban	\$994,770	
90740	Alloway Creek Bridge	Germany/ Mount Joy	\$172,000	
18049	Mengus Mill Road Bridge	Germany	\$9,752	
18154	Stoney Point Road Bridge	Reading	\$391,593	
Subtotals:			\$5,584,456	
SAFETY PROJECTS				
114856	TSMO Adams County Devices	Adams	\$1,243,849	
Subtotals:			\$1,243,849	
BIKE/PEDESTRIAN PROJECTS				
118363	Gettysburg FLAP Grant PA 23	Gettysburg	\$800,000	
Subtotals:			\$800,000	
TRANSIT PROJECTS				
110665	Fixed Route Buses	Regionwide	\$396,000	
Subtotals:			\$396,000	

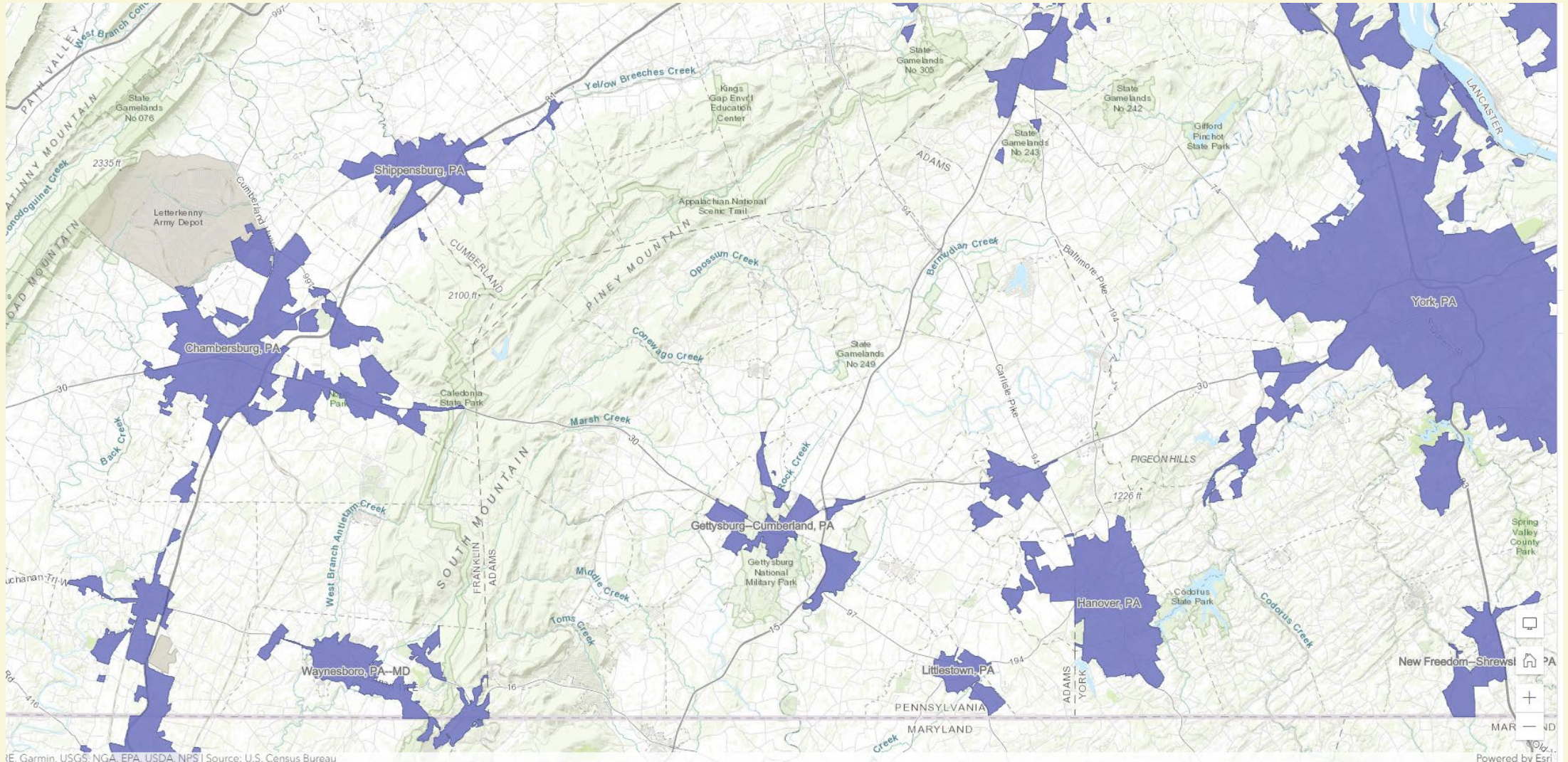
FFY 2022 Adams County Obligation Report



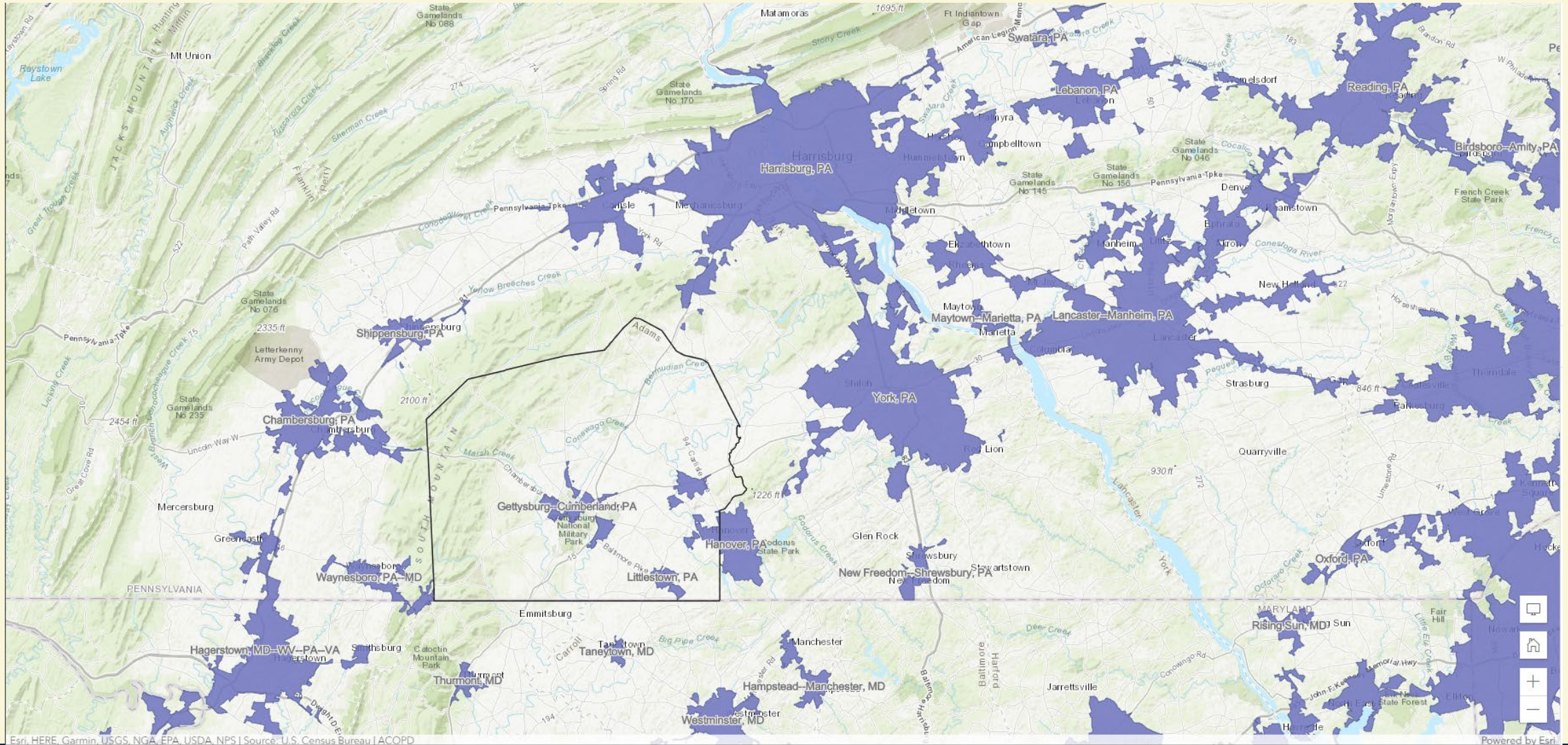
Staff Updates – 2020 Urban Area Boundaries



Staff Updates – 2020 Urban Area Boundaries



Staff Updates – 2020 Urban Area Boundaries



Performance Measures for Adams County

MAP-21 and FAST Act established a series of performance measures for State DOT's and MPO's to work towards.

- Safety (PM-1) – Last adopted on January 26, 2022 (Adopt yearly)
 - PM-1 measures how safe the transportation network is for users.
 1. Number of Fatalities
 2. Rate of Injuries
 3. Number of Serious Injuries
 4. Rate of Serious Injuries
 5. Number of non-motorized fatalities and serious injuries
- Pavement and Bridge Conditions (PM-2) – Adopted on October 31, 2018; Updated January 27, 2021 (Adopt every 4 years)
 - PM-2 measures the condition of the transportation network.
 - Assess the condition of the Interstate and National Highway System (NHS) pavements and bridges.
- System Performance (PM-3) – Adopted on October 31, 2018; Updated January 27, 2021 (Adopt every 4 years)
 - PM-3 measures the performance of the system (or the lack thereof).
 - Assess the level of reliability and congestion of the transportation network.

Performance Measures for Adams County – PM-1

Safety Baselines (PM-1)

Performance Measure	2012-2016 Baseline	2013-2017 Baseline	2014-2018 Baseline	2015-2019 Baseline	2016-2020 Baseline	2017-2021 Baseline
Fatalities	12.8	9	11.2	12.4	12.8	12.0
Fatality Rate	1.433	1.008	1.253	1.380	1.461	1.363
Serious Injuries	34.0	41.6	42.8	45.8	50.4	50.0
Serious Injury Rate	3.805	4.659	4.787	5.098	5.754	5.681
Non-Motorized Fatalities / Serious Injuries	3.5	2.8	4	3.6	4.4	3.8

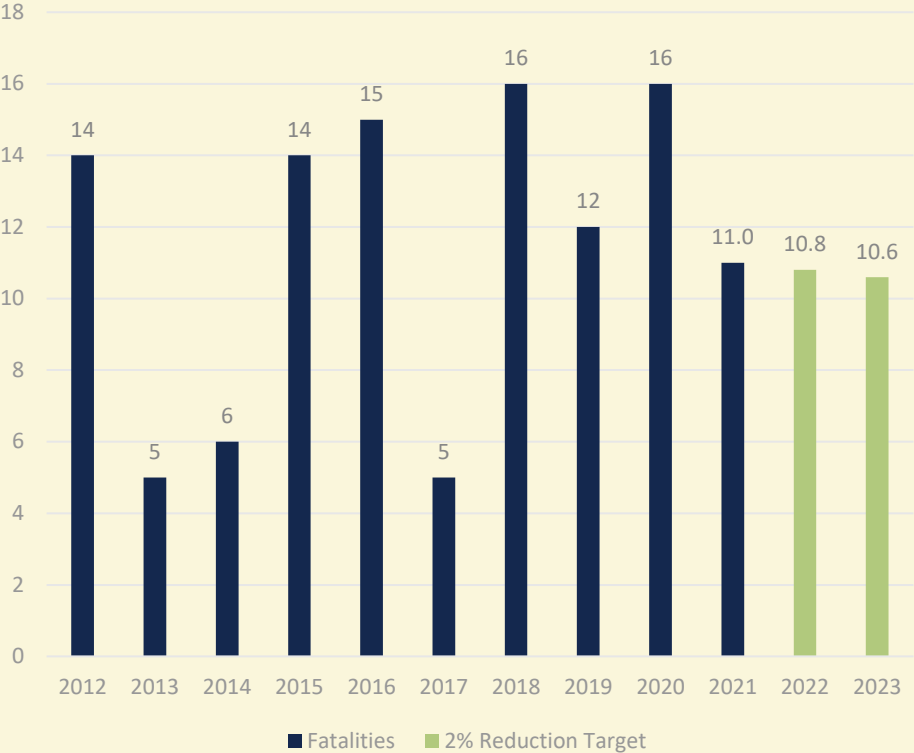
Performance Measures for Adams County – PM-1

Safety Targets (PM-1)

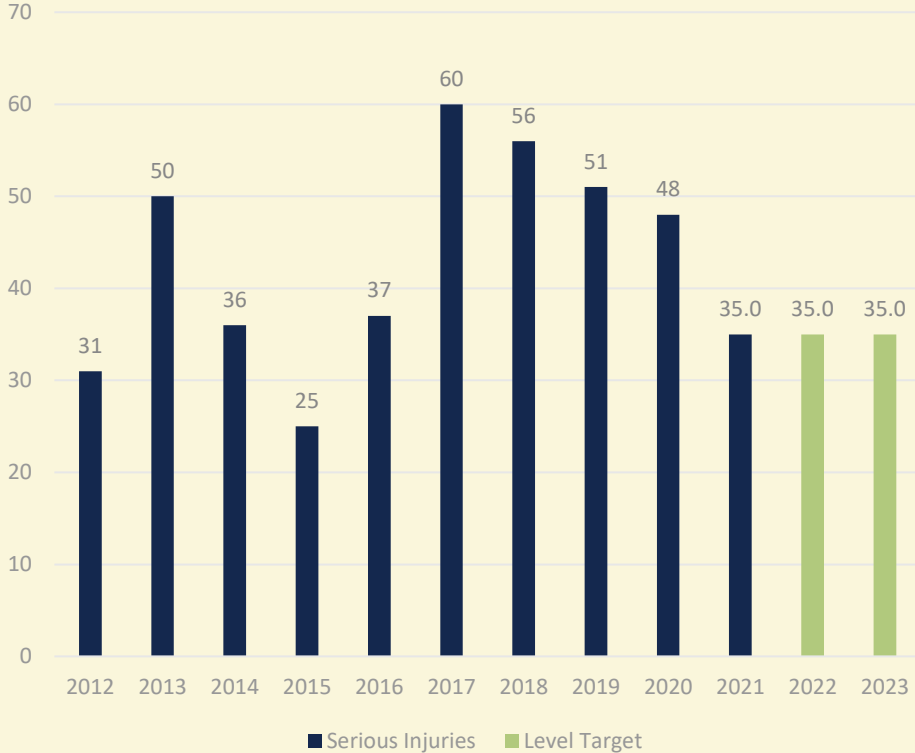
Performance Measure	2014-2018 Targets	2015-2019 Targets	2016-2020 Targets	2017-2021 Targets	2018-2022 Targets	2019-2023 Targets
Fatalities	10.8	8.7	13.5	11.3	15.0	12.1
Fatality Rate	1.218	0.956	1.492	1.250	1.816	1.361
Serious Injuries	35.8	47.7	52.6	53.8	50.2	40.8
Serious Injury Rate	4.044	5.242	5.812	5.953	6.079	4.590
Non-Motorized Fatalities / Serious Injuries	2.8	2.9	6.9	2.4	4.8	2.2

Performance Measures for Adams County – PM-1

Adams MPO Fatalities

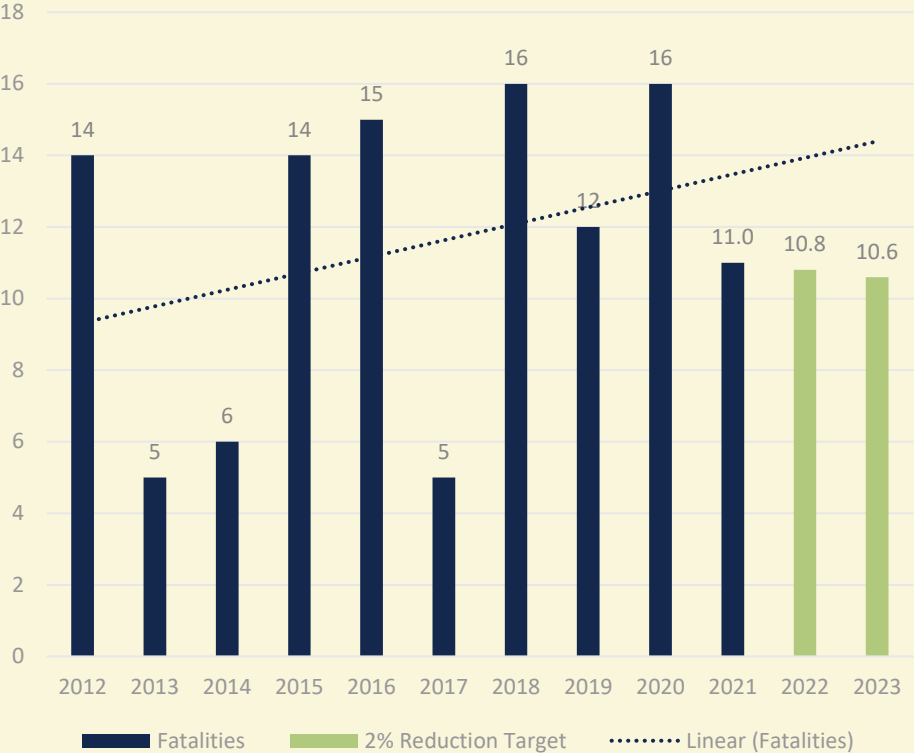


Adams MPO Serious Injuries

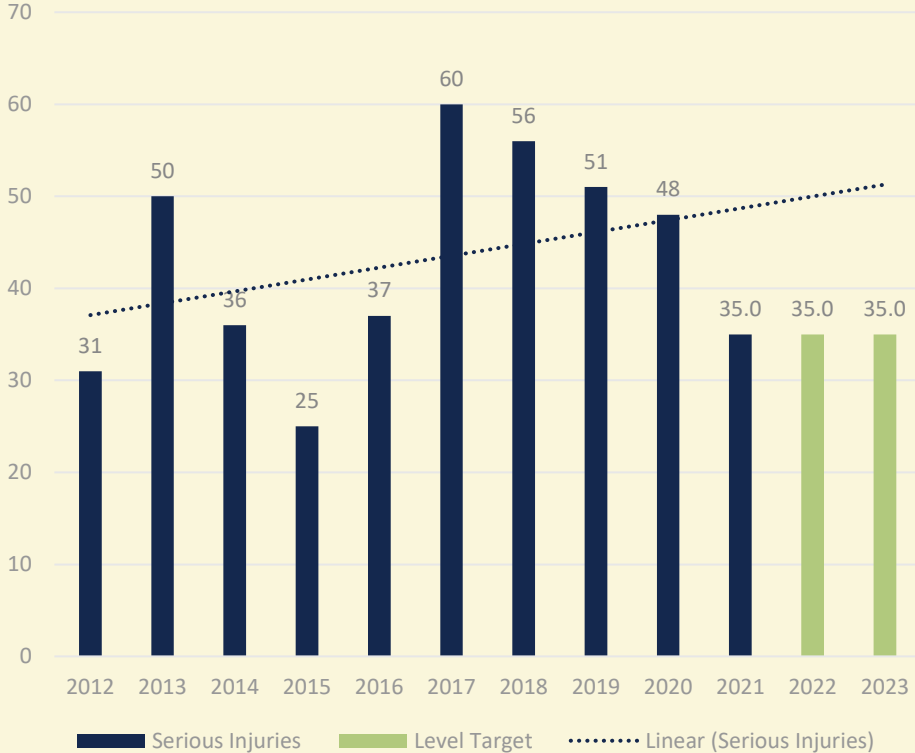


Performance Measures for Adams County – PM-1

Adams MPO Fatalities

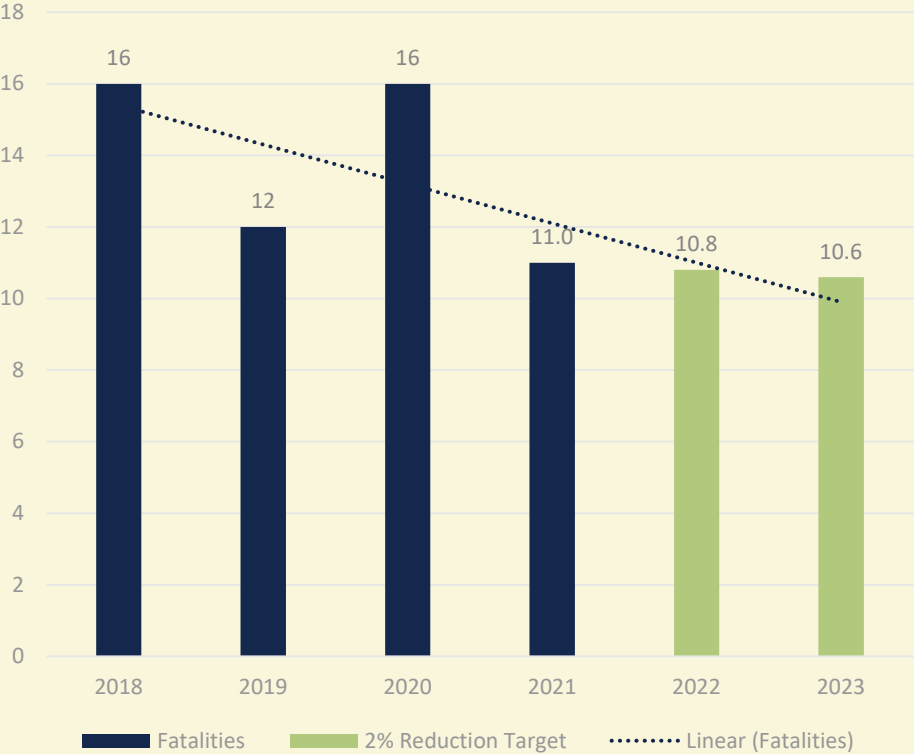


Adams MPO Serious Injuries

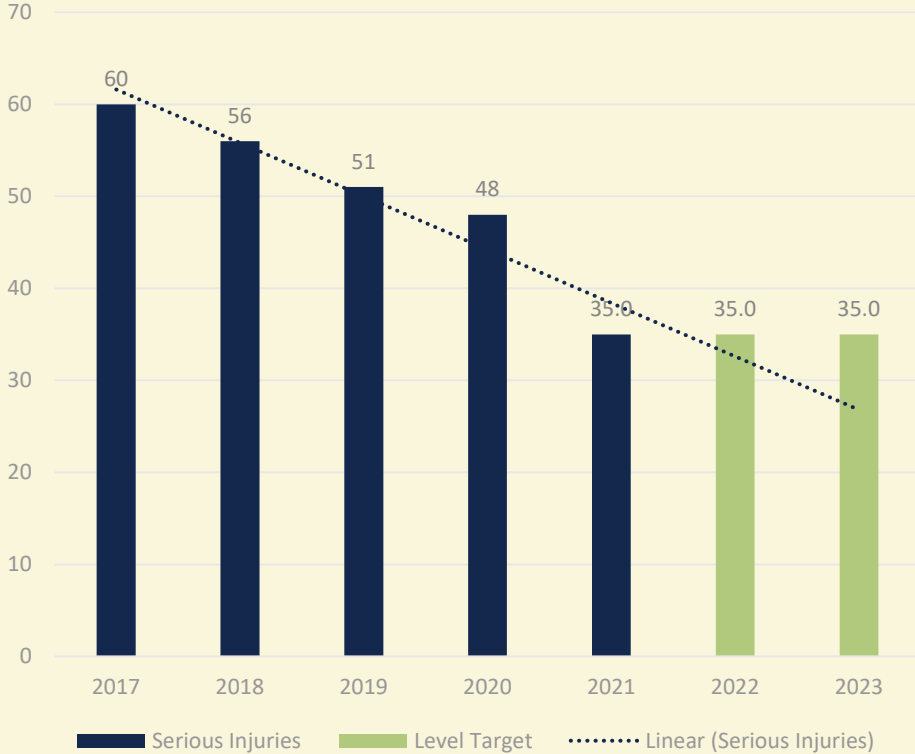


Performance Measures for Adams County – PM-1

Adams MPO Fatalities



Adams MPO Serious Injuries



Memorandum of Understanding (MOU) – ACTPO and YAMPO

- ACTPO (Adams County) and YAMPO (York County) share the Hanover Urbanized Area (UA).
- In 2013, following the 2010 Census, it was decided that each MPO would be responsible for all required transportation planning functions for the portion of the Hanover UA in each county.
- At the time, there were no funding programs that allocated funds specifically to UA with less than 200,000 in population.
- As a result, no formal agreement was adopted to codify this arrangement.

Memorandum of Understanding (MOU) – ACTPO and YAMPO

- The 2021 Infrastructure Investment and Jobs Act (IIJA), also known as the Bipartisan Infrastructure Law (BIL) was signed on November 15, 2021.
- Among the programs included in this legislation was the Carbon Reduction Program (CRP). \$6.4B has been provided over 5 years.
- Crucially, CRP funds are allocated to all UA’s including those between 50,000 and 200,000 in population, including Hanover. The allocation of CRP funds to the Hanover UA is:

2023	2024	2025	2026	Total
\$348,783	\$179,640	\$183,233	\$186,898	\$898,554

- Since funds specifically tied to the Hanover UA now exist, a formal agreement on how to handle those funds, and other planning processes, is needed.

Memorandum of Understanding (MOU) – ACTPO and YAMPO

MEMORANDUM OF UNDERSTANDING (MOU)

MPO Boundaries and Coordination of Transportation Planning and Programming between York Area Metropolitan Planning Organization (YAMPO) and Adams County Transportation Planning Organization (ACTPO)

I. Background and Purpose

- a. The Year 2010 Census defined Urbanized Area (UA) for Hanover extends into Adams County along the US Route 30 corridor and includes a part or all of the Boroughs of Abbottstown, New Oxford, and Gettysburg. By federal statute, an MPO, or coverage by adjacent MPOs, is required where there is an Urbanized Boundary.
 - i. Upon release of the geodata, the Year 2020 Census defined Urbanized Area (UA) for Hanover will take place of the current 2010 Census defined Hanover Urbanized Area.
- b. The York Area Metropolitan Planning Organization (YAMPO) and the Adams County Transportation Planning Organization (ACTPO) recognize that the Hanover, Pennsylvania Urbanized Boundary extends into Adams County, Pennsylvania. The purpose of this agreement is to define the roles and responsibilities of the Metropolitan Planning Organizations (MPOs).
- c. This agreement provides the framework for the responsibilities of the YAMPO and ACTPO relative to the federally mandated transportation planning, programming, and funding for the Hanover Urbanized Area within Adams County. Each MPO will coordinate with the other on planning and programming of studies and projects that will affect the economy, environment, transportation systems, and quality of life for the citizens within their respective planning areas.

II. General Points of Understanding and Agreement

- a. We agree to collaborate in the planning, conduct, and reporting of transportation-related information at the state and regional levels. We agree to share information and plans in order to achieve the goals of state and regional transportation plans, and to assist, where appropriate, in the joint selection of projects, and improve the coordination of investment across borders.
- b. We agree to work together to achieve compliance with all applicable federal planning regulations and guidance. We will work collaboratively to address the certification review that take place every four years, as scheduled by the U.S. Department of Transportation – Federal Highway Administration and Federal

MEMORANDUM OF UNDERSTANDING (MOU)

Transit Administration – Region 3, in order to continually improve upon our transportation Planning processes.

- c. We agree that staffs of both MPOs will meet as needed to review progress of cooperative efforts, to discuss key findings from program activities, and to discuss the scope, plans and implementation of activities under consideration for the next planning cycle.
- d. This agreement will be reviewed when either agency identifies the need for review.

III. Specific Points of Understanding and Agreement

a. MPO Boundary

- i. The York Area MPO/Adams County MPO boundary is now and has been coincident with the common boundaries between York and Adams counties (and by this MOU is proposed to remain so).

b. Long Range Transportation Plans (LRTP)

- i. We recognize the currently adopted GOYORK 2045 Metropolitan Transportation Plan (MTP) the transportation plan for York County, Pennsylvania. This includes the portion of the Hanover Urbanized Area in York County.
- ii. We recognize the currently adopted ONWARD2050, Adams County MPO Long Range Transportation Plan, is the transportation plan for Adams County, Pennsylvania. This includes the portion of the Hanover Urbanized Area in Adams County.
- iii. We agree the York County MPO will address the planning and programming needs of the Hanover Urbanized Area within York County. Findings of the York County MPO concerning its portion of the Hanover Urbanized Area will be incorporated into the Long Range Transportation Plans for both MPOs.
- iv. We agree the Adams County MPO will address the planning and programming needs of the Hanover Urbanized Area within Adams County. Findings of the Adams County MPO concerning its portion of the Hanover Urbanized Area will be incorporated into the Long Range Transportation Plans for both MPOs.

c. Transportation Improvement Program (TIP)

- i. We agree to work together on planning and programming projects for the Hanover Urbanized Area within Adams County and assure that applicable funds are spent on projects and programs that improve the transportation system.

Memorandum of Understanding (MOU) – ACTPO and YAMPO

MEMORANDUM OF UNDERSTANDING (MOU)

- ii. We agree to work together on planning and programming projects for the Hanover Urbanized Area within York County and assure that applicable funds are spent on projects and programs that improve the transportation system.
 - iii. To help ensure continuity of federal and state funds and help support project delivery, i.e. Transportation Improvement Program, both the York County MPO and Adams County MPO agree to abide by the methodology and process used within Pennsylvania to allocate federal and state funds to the respective MPO's. The federal and state formulas will continue to follow county boundaries and not by the Urbanized Area Boundary. Surface Transportation Program Urban (STU) funds will not be divided between the York and Adams County MPOs. Congestion Reduction Funds will be divided between the York County MPO and Adams County MPO based on the percentage of the Hanover Urbanized Area population within Adams County and York County as parts of the entire Hanover Urbanized Area population. Such funds will be used for projects in each County's portion of the Hanover Urbanized Area.
- d. Unified Planning Work Program (UPWP)
- i. As part of the UPWP process, the Adams County MPO and York County MPO will develop and submit a work plan for all work related to the use of the Congestion Reduction Funds within their respective portions of the Hanover Urbanized Area.
 - ii. To help ensure the continuity of federal funds and help support the planning process between the two existing MPO planning area boundaries, each agency agrees to abide by the methodology and process currently used to allocate planning funds to the respective MPOs.
- e. Other Planning Activities
- i. We agree to work together to identify the need for corridor projects that cross the MPO boundary.
 - ii. We agree the Adams County MPO will address urban area boundary issues and review the functional classification of all public roads and streets within Adams County. This review will be completed using the National Function Classification System guidelines.
 - iii. We agree the York County MPO will address urban area boundary issues and review the functional classification of all public roads and streets within York County. This review will be completed using the National Function Classification System guidelines.

Mr. Brian Hare, Chair
York Area Metropolitan Planning Organization

Date

MEMORANDUM OF UNDERSTANDING (MOU)

Director,
Center for Program Development and Management
Pennsylvania Department of Transportation

Mr. Bob Gordon, Chairman
Adams County Transportation Planning Organization

Date

DRAFT

2022 – 2024 Unified Planning Work Program (UPWP) – Addition

Task V: Increasing Safe and Accessible Transportation Options (ISATO)

Responsible Agency

Adams County Office of Planning and Development (ACOPD)

Cost and Funding Sources

UPWP Year	FHWA	FTA	PennDOT	Local Highway	Local Transit	Total
2022-2023	\$4,320	\$0	\$0	\$0	\$0	\$4,320
2023-2024	\$4,525	\$0	\$0	\$0	\$0	\$4,525
Total	\$8,845	\$0	\$0	\$0	\$0	\$8,845

Task V Description

Task V.1 – Adams County Active Transportation Safety Analysis Tool: Develop and refine an Active Transportation and Safety Analysis tool to 1) identify the level of stress felt by pedestrians and bicyclists along roads throughout Adams County, 2) identify gaps in the active transportation network in Adams County, and 3) identify locations of potential active transportation safety improvements in Adams County.

This will be accomplished through the development of a set of criteria to measure the amount of stress facing active transportation users as a baseline to evaluate, guide, and expand active transportation network planning. It will also involve establishing a methodology to maintain the data supporting this tool at a countywide and statewide level.

This tool will then be used by the MPO to identify locations of potential active transportation network connections and safety improvements for to prioritize for incorporation into existing projects and/or future funding opportunities.

Task V Deliverables:

- Adams County Active Transportation Safety Analysis Tool, including public facing GIS hub map.

Task V Timeline

Task	Completion Target
Adams County Active Transportation Safety Analysis Tool	2023

2023-2026 TIP Administrative Actions

FFY 2023-2026 TIP MODIFICATIONS FORM

Administrative Modification - Highway				Funds		FFY 2023			FFY 2024			FFY 2025			FFY 2026			Remarks		
Item	Project Title	MPMS	Ph	Prog	Fed	Sta.	Fed.	Sta.	Loc.	Fed.	Sta.	Loc.	Fed.	Sta.	Loc.	Fed.	Sta.		Loc.	
10	PA 116 over Trib Marsh Crk	106665	FD	Before		185		206,000											Removing the FD phase of PA 116 over Trib Marsh Crk in FFY 2023 for \$206,000. These funds were obligated on the 2021 TIP. This project consists of a bridge rehabilitation on PA 116 (Fairfield Road) over Tributary to Marsh Creek in Highland Township, Adams County. This project has a current estimated let date of May 9, 2024.	
	Adjust				185		-206,000													
	After																			
11	Piney Creek Bridge 2	90692	UTL	Before															Adding the UTL phase of Piney Creek Bridge 2 in FFY 2023 for \$46,000 to the current estimate. This project consists of a bridge replacement on PA 97 over Tributary to Piney Creek in Germany Township, Adams County. This project has a current estimated let date of May 25, 2023.	
	Adjust				185		46,000													
	After				185		46,000													
12	Bridge Reserve		CON	Before	BOF	185							52,000						This is a line item.	
	Before			BRIP										16,000						
	Adjust			BOF	185		160,000													
	Adjust			BRIP																
	After			BOF	185		160,000								52,000					
	After			BRIP											16,000					

2023-2026 TIP Administrative Actions

FFY 2023-2026 TIP MODIFICATIONS FORM

Administrative Modification - Highway				Funds		FFY 2023			FFY 2024			FFY 2025			FFY 2026			Remarks			
Item	Project Title	MPMS	Ph	Prog	Fed	Sta.	Fed.	Sta.	Loc.	Fed.	Sta.	Loc.	Fed.	Sta.	Loc.	Fed.	Sta.		Loc.		
16	US 15 Preservation NorthBound	116595	CON	Before	NHPP		3,147,931			3,416,299			2,360,000						Cashflowing the CON phase of the US 15 Preservation Northbound from FFY 2023 to FFY 2025 for \$410,000 to better align with current estimated let date. This project consists of a pavement preservation on US 15 (Blue-Gray Highway) from the Maryland line to PA 394 (Shrivers Corner Road) in Freedom, Cumberland, Mount Joy and Straban Townships. This project has a current estimated let date of Dec. 14, 2023.		
	15/059			Before	STP		113,585			1,302,140											
				Adjust	NHPP		-410,000								410,000						
				Adjust	STP																
				Adams	After	NHPP		2,737,931				3,416,299				2,770,000					
					After	STP		113,585				1,302,140									
17	94 & 234 Intersection Imp	94897	CON	Before	NHPP		135,069												Increasing the CON phase of the SR 94 & 234 Intersection Imp project in FFY 2023 for \$410,000 for additional construction inspection costs. This project will consists of an intersection improvement, adding left turn lanes and protected phasing to the intersection of PA 94 (Carlisle Pike) and PA 234 (East Berlin Road) in Reading Township, Adams County. This project was let on March 18, 2021.		
	94/026			Adjust	NHPP		410,000														
	Adams			After	NHPP		545,069														
18	Carlisle Pike Resurface 2	115745	CON	Before	NHPP								1,000,000			2,874,000			Decreasing the CON phase of the Carlisle Pike Resurface 2 project in FFY 2025 for \$410,000 to the current estimate. This project consists of the resurfacing on PA 94 (Carlisle Pike) from Gun Club Road to Mud Run in Hamilton and Reading Townships, Adams County. This project has a current estimated let date of Jan. 1, 2025.		
	94/032			Adjust	NHPP									-410,000							
	Adams			After	NHPP									590,000			2,874,000				
Program Summary - Net Changes				Before FFY Totals			11,415,059	1,149,700	0	15,022,317	969,500	0	8,216,000	0	0	2,874,000	0	0			
				Adjustments			0	0	0	0	0	0	0	0	0	0	0	0	0	0	
				After FFY Totals			11,415,059	1,149,700	0	15,022,317	969,500	0	8,216,000	0	0	2,874,000	0	0			

Next ACTPO Meeting

April 26, 2023

1:00 p.m.